

Transmission SAXS (small-angle scattering) Package Measurement

Contents

1. Package measurement flow	1
2. Measurement procedures	3
2.1 Startup.....	3
2.2 Hardware setup	4
2.3 Setting Package measurement conditions	7
2.3.1 Setting Optics Alignment (SA) Part conditions	8
2.3.2 Setting Sample Alignment (SA) Part conditions.....	9
2.3.3 Setting Transmission SAXS Measurement Part conditions	10
2.4 Customizing Part conditions.....	13
2.4.1 Customizing Transmission SAXS Measurement Part conditions.....	13
2.5 Executing a Package measurement.....	15
2.6 Changing configuration units	22
2.7 Shutdown	24
3. Executing a Part individually	25
3.1 Executing the Optics Alignment (SA) Part.....	25
3.2 Executing the Sample Alignment (SA) Part	27
3.3 Executing the Transmission SAXS Measurement Part.....	28
4. Troubleshooting	31

1. Package measurement flow

Figure 1.1 shows the procedural flow for a **Transmission SAXS (small-angle scattering)** Package measurement.

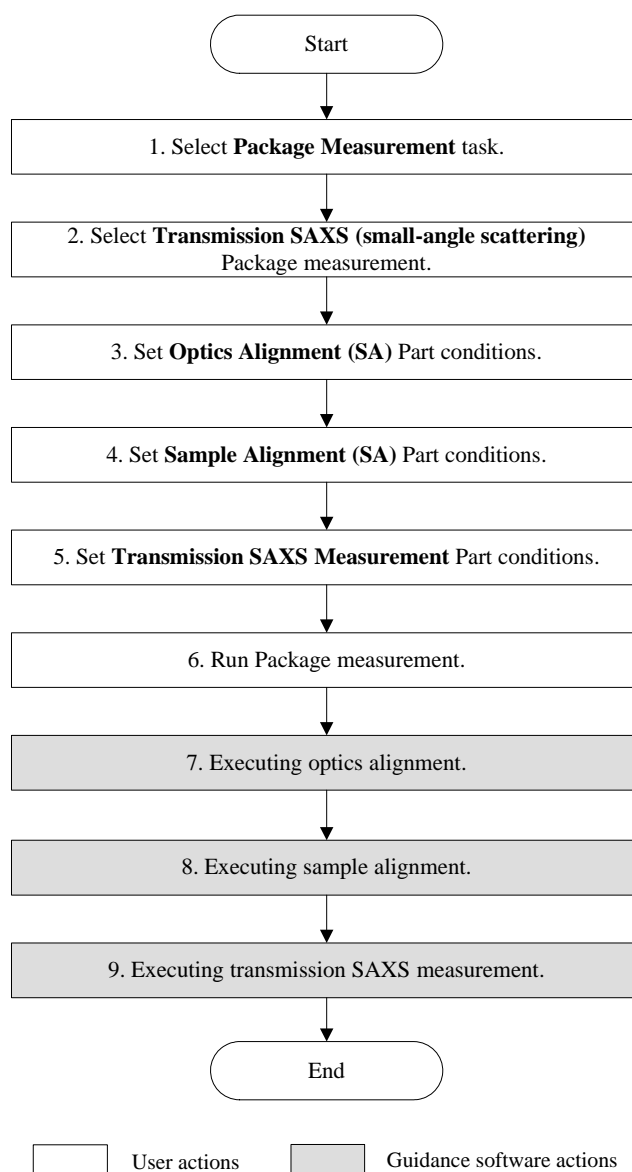
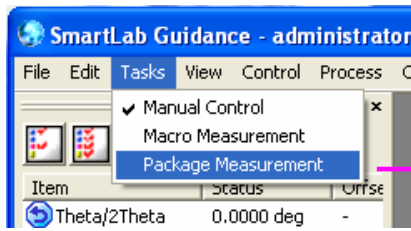


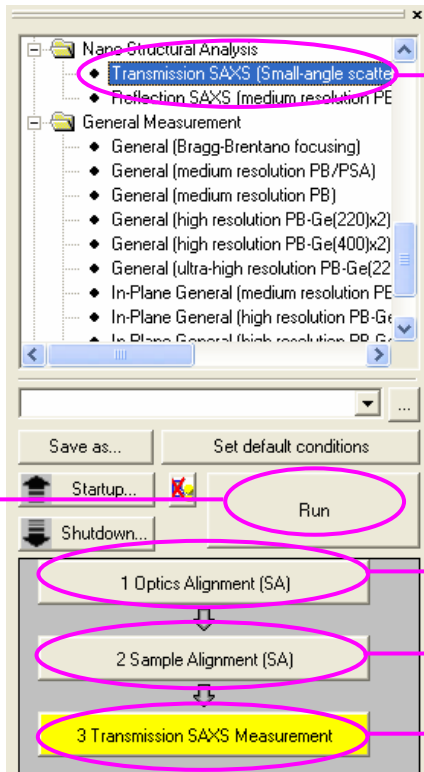
Fig. 1.1 Transmission SAXS (small-angle scattering) Package measurement procedural flow

1. Package measurement flow

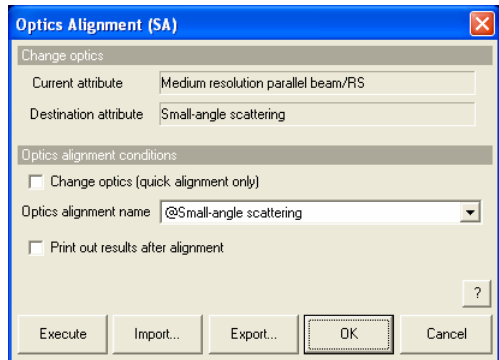


1. Click **Package Measurement** in the **Tasks** menu.

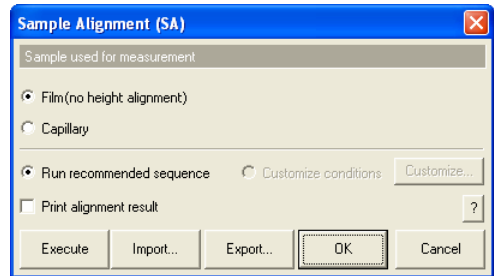
2. Click **Transmission SAXS (small-angle scattering)**.



3. Set the **Optics Alignment (SA)** Part conditions.

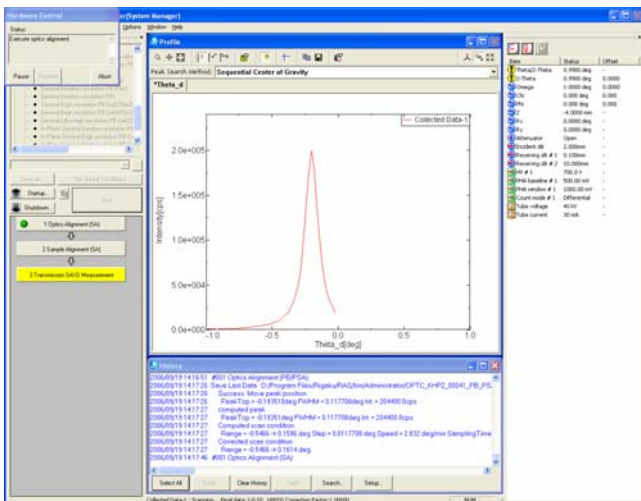
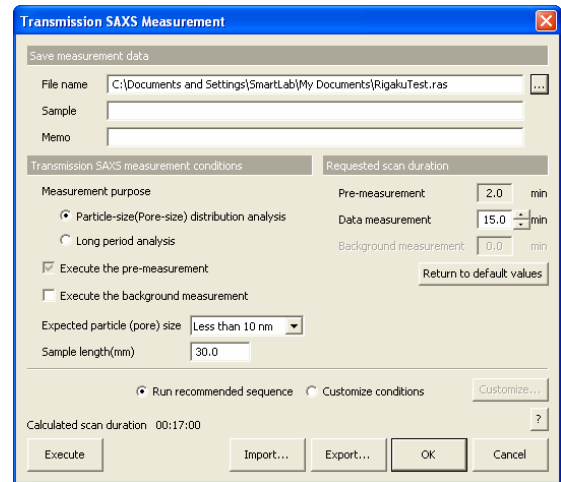


4. Set the **Sample Alignment (SA)** Part conditions.



6. When the **Run** button is clicked, the optics alignment is started.

5. Set the **Transmission SAXS Measurement** Part conditions.

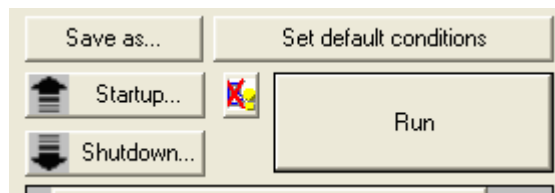


2. Measurement procedures

2.1 Startup

Before measurement, set the output of the x-ray generator (XG) as described below.

- (1) Click the **Startup** button on the flow bar to open the **Startup** dialog box.



- (2) Uncheck the **Timer** box.

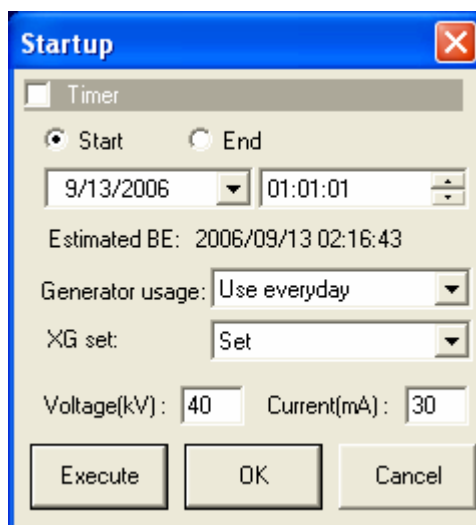


Fig. 2.1.1 Startup dialog box

- (3) Select an appropriate setting in the **Generator usage** box, based on the frequency of XG usage.
 (4) Select **Set** in the **XG set** box.
 (5) Enter the following values in the **Voltage (kV)** and **Current (mA)** boxes.

When using 3-kW sealed tube	40 kV, 30 mA
When using 9-kW rotating anode	45 kV, 200 mA

- (6) Click the **Execute** button.
 (7) The aging operation begins. The XG output will be set to the values entered in step (5) within 30 to 60 minutes.



CAUTION: If **Not used for more than 3 weeks** is selected in the **Generator usage** box, the aging operation will take approximately five hours.



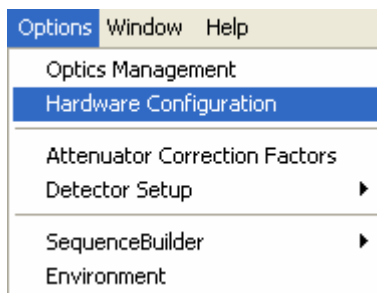
Tip: For other functions available from the **Startup** dialog box, refer to Chapter 21 of the *SmartLab Guidance Reference Manual* (ME13365A).

2.2 Hardware setup

Before measurement, the equipment configuration must be set up for a **Transmission SAXS (small-angle scattering)** Package measurement.

The hardware setup method is described below.

- (1) Select the **Hardware Configuration** command under the **Options** menu to open the **Hardware Configuration** dialog box.



- (2) The **Hardware Configuration** dialog box shows the current hardware configuration.

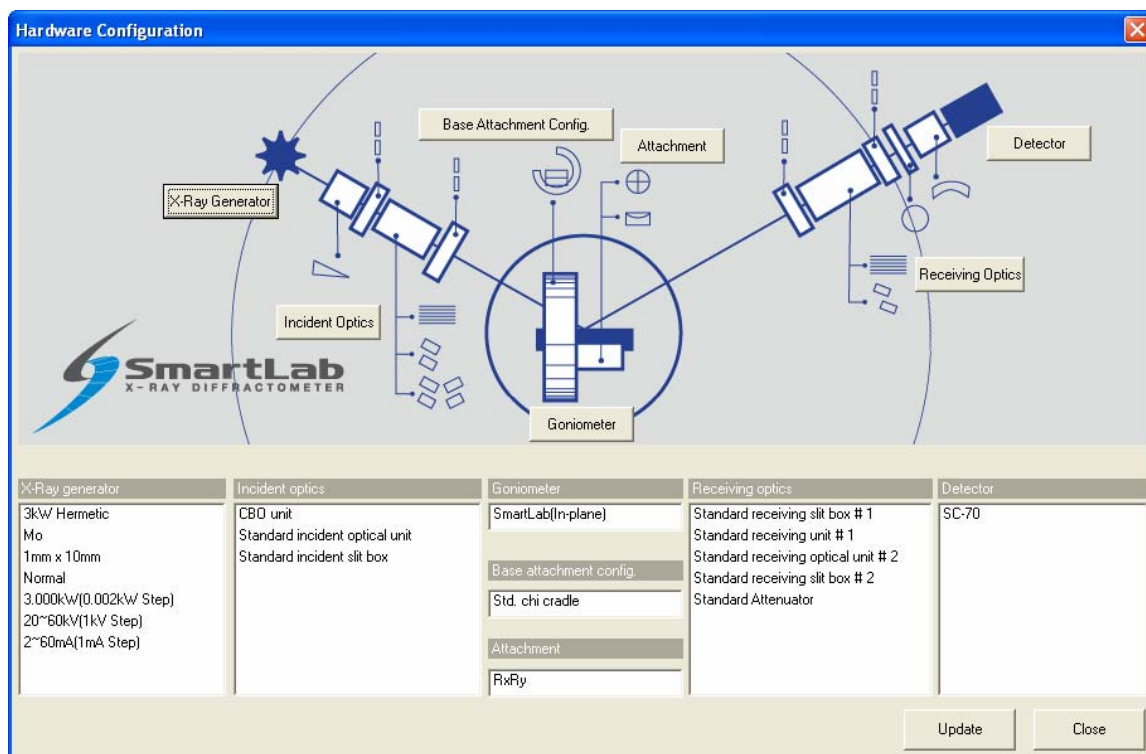


Fig. 2.2.1 Hardware Configuration dialog box

- (3) Table 2.2.1 shows the hardware configuration that enables the **Transmission SAXS (small-angle scattering)** Package measurement. If the configuration units shown in the **Hardware Configuration** dialog box differ from those indicated in Table 2.2.1, install the units specified in Table 2.2.1 at the designated locations, referring to the *Horizontal Sample Mount X-Ray Diffractometer for Thin Film Analysis Instruction Manual (ME11550A)*.

Table 2.2.1 Hardware configuration for the Transmission SAXS (small-angle scattering) Package measurement

Hardware configuration	Configuration units
X-ray generator	Cu target
Incident optics	CBO unit Standard incident optical unit Standard incident slit box
Goniometer	SmartLab or SmartLab(in-plane)
Base attachment configuration	Standard chi cradle
Attachment	Any
Receiving optics	Standard receiving slit box # 1 Standard receiving optical unit # 1 Standard receiving optical unit # 2 Standard receiving slit box # 2 Standard attenuator
Detector	Scintillation counter SC-70

For example, if the target is set to **Mo** in the **X-Ray Generator** dialog box, you must change the target setting to **Cu**, since the **Transmission SAXS (small-angle scattering)** Package measurement will not be made unless the Cu target is used. For sealed tubes, you must replace the Mo tube with the Cu tube.

- (4) Click the **X-Ray Generator** button to open the **X-Ray Generator** dialog box.

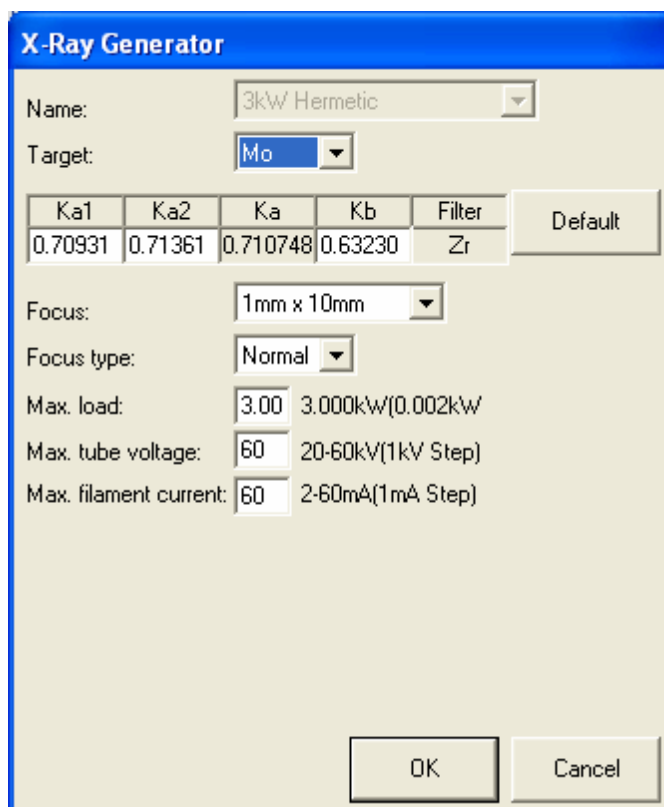


Fig. 2.2.2 X-Ray Generator dialog box

2. Measurement procedures

- (5) Select **Cu** in the **Target** box. Change other applicable parameters, such as wavelength.
- (6) Click the **OK** button to close the **X-Ray Generator** dialog box and register the changes made in the **Hardware Configuration** dialog box.
- (7) If necessary, change configuration units using the **Incident Optics**, **Receiving Optics**, and **Detector** buttons. Modify the conditions in the **Hardware Configuration** dialog box in the same way.
- (8) Click the **Update** button in the **Hardware Configuration** dialog box.



Tip: Mounted configuration units are automatically detected for **Base Attachment Configuration** and **Attachment**.

- (9) Confirm that each configuration unit displayed in the **Hardware Configuration** dialog box corresponds to the configuration unit indicated in Table 2.2.1, then click the **Close** button to close the dialog box.

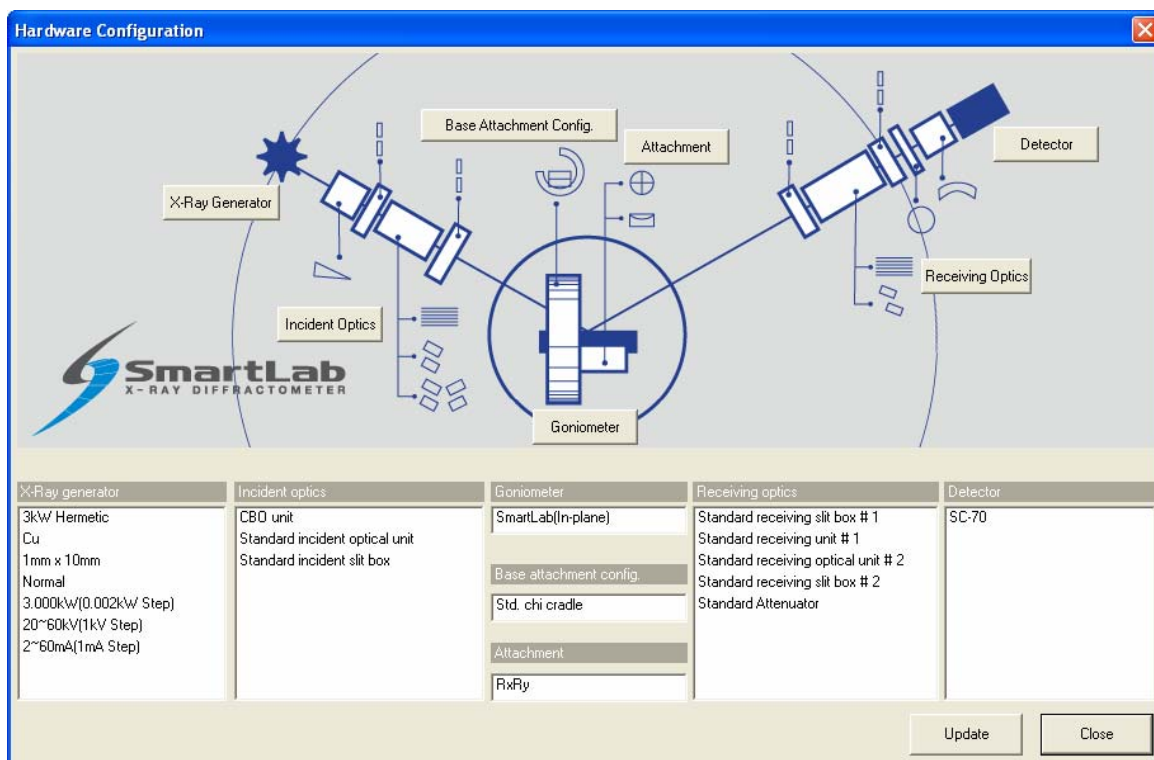


Fig. 2.2.3 Hardware Configuration dialog box

2.3 Setting Package measurement conditions

The Parts included in the **Transmission SAXS (small-angle scattering)** Package measurement are shown in the table below.

Package measurement	Configuration Parts
Transmission SAXS (small-angle scattering)	<ul style="list-style-type: none">• Optics Alignment (SA)• Sample Alignment (SA)• Transmission SAXS Measurement

To perform the Package measurement, you must set the conditions of each of the three Parts individually. Described below is how to set the conditions of each Part.



CAUTION: If another Package measurement is selected or another task such as the **Manual Control** task is chosen, discard the set Part conditions. To save the set conditions to a file, click the **Export** button in each dialog box or save Package measurement conditions as described in the “Tip” section in Subsection 2.3.3 (10).

2.3.1 Setting Optics Alignment (SA) Part conditions

- (1) Click the **Optics Alignment (SA)** button on the flow bar to open the **Optics Alignment (SA)** dialog box.

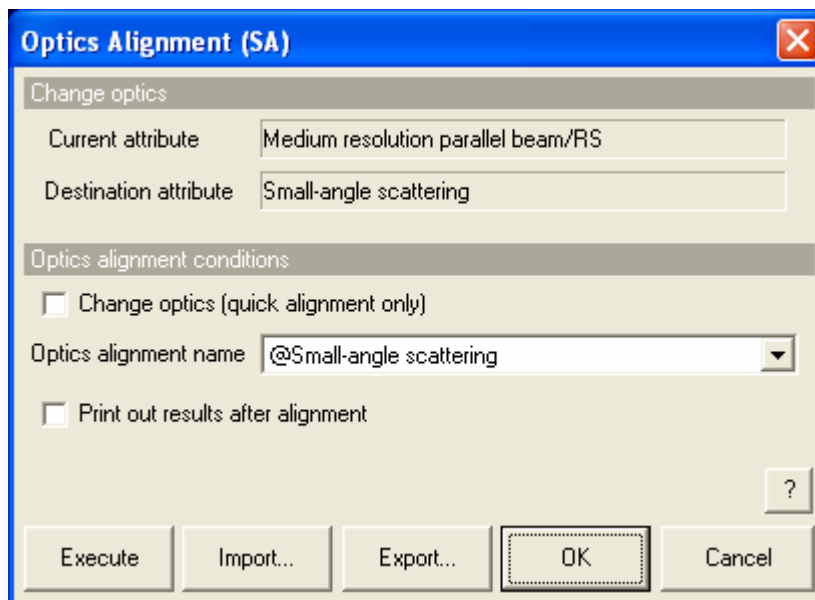


Fig. 2.3.1 Optics Alignment (SA) dialog box

- (2) Uncheck the **Change optics (quick alignment only)** box.



Tip: Check the **Change optics (quick alignment only)** box to switch optics for the transmission SAXS measurement using the alignment results stored under the selected optics alignment name by performing a quick alignment.

- (3) In the **Optics alignment name** box, select a location for storing optics alignment results.



Tip: To store optics alignment results under a new optics alignment name, click the **OK** or **Cancel** button to close the **Optics Alignment (SA)** dialog box. Then, select the **Optics Management** command from the **Options** menu to open the **Optics Management** dialog box and add a new optics alignment name. After adding a new optics alignment name, return to step (1) in this subsection. For more information on creating an optics alignment name, refer to Chapter 17 of the *SmartLab Guidance Reference Manual* (ME13365A).

- (4) To print the optics alignment results, check the **Print out results after alignment** box.



Tip: If both the **Change optics (quick alignment only)** and **Print out results after alignment** boxes are checked, the alignment results stored under the selected optics alignment name will be printed.

- (5) Click the **OK** button to close the dialog box.

2.3.2 Setting Sample Alignment (SA) Part conditions

- (1) Click the **Sample Alignment (SA)** button on the flow bar to open the **Sample Alignment (SA)** dialog box.

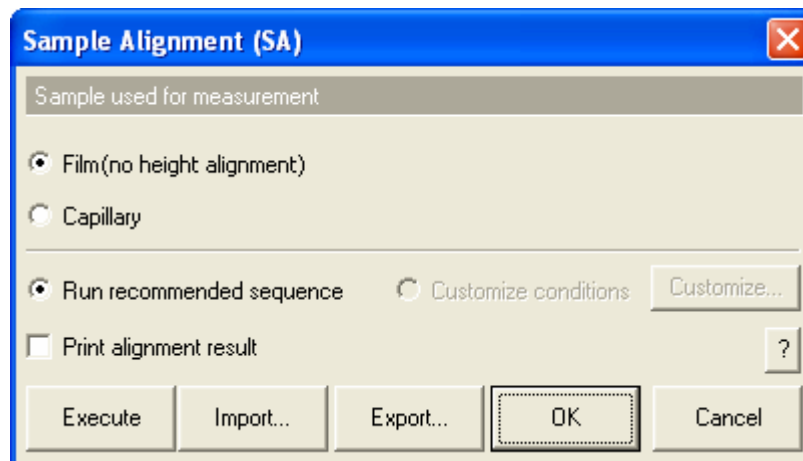


Fig. 2.3.2 Sample Alignment (SA) dialog box

- (2) Select **Film (no height alignment)** or **Capillary** as the sample form.
- (3) To print the sample alignment results, check the **Print alignment result** box.



Tip: It is recommended to print the alignment results to estimate the transmission factor (absorption factor) of x-rays for the sample.

- (4) Click the **OK** button to close the dialog box.

2.3.3 Setting Transmission SAXS Measurement Part conditions

- (1) Click the **Transmission SAXS Measurement** button on the flow bar to open the **Transmission SAXS Measurement** dialog box.

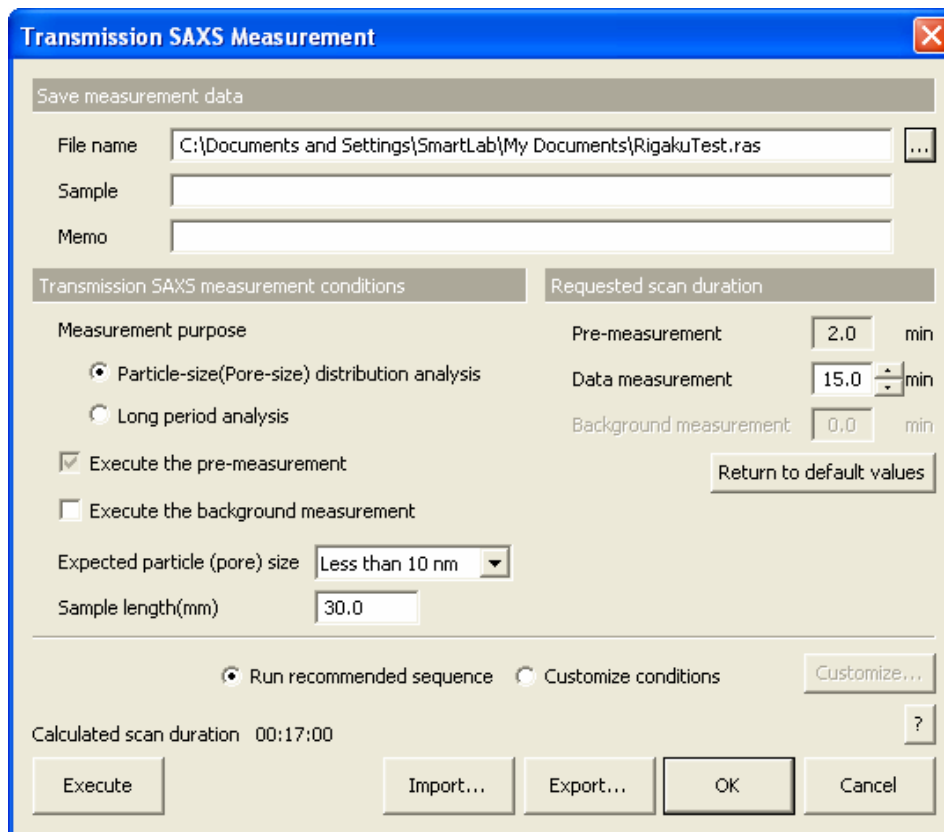


Fig. 2.3.3 Transmission SAXS Measurement dialog box

- (2) Set the folder to store the measurement data and the name of the measurement data file in the **File name** box in the **Save measurement data** section. After completing the transmission SAXS measurement, the measurement data will be saved with the specified file name.
 1. Click the [...] button to open the **Save As** dialog box.

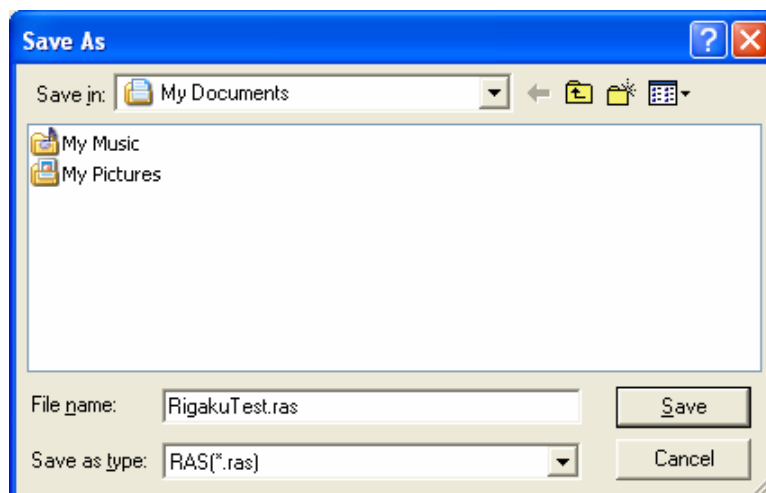


Fig. 2.3.4 Save As dialog box

2. Enter the settings in the **Save in** and **File name** boxes.
3. Click the **Save** button.
- (3) Enter any required information in the **Sample name** and **Memo** boxes (optional).



CAUTION: The information entered here will be saved to the file. Any number of characters may be entered, but only the first 30 characters of the sample name and the first 84 characters of the memo will appear on the printed measurement data.

- (4) Select **Particle-size (Pore-size) distribution analysis** or **Long period analysis** for **Measurement purpose**.
- (5) To make the background measurement, check the **Execute the background measurement** box.
- (6) In the **Expected particle(pore) size** box, select **More than 10 nm**, **Less than 10 nm**, or **Unknown** as the expected particle/pore size.

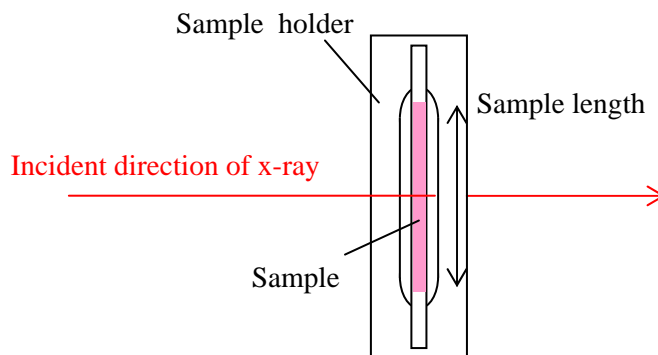


Tip: Set the conditions in steps (5) and (6) only when **Particle-size(Pore-size) distribution analysis** is selected for **Measurement purpose**.

- (7) Enter the length of the sample in the **Sample length (mm)** box.



Tip: The sample length refers to the dimension (unit: mm) of the sample in the direction shown below.





- (8) Enter the preferred duration of the data measurement in min (to one decimal place) in the **Data measurement** box.




Tip: The default value is 15.0 minutes.

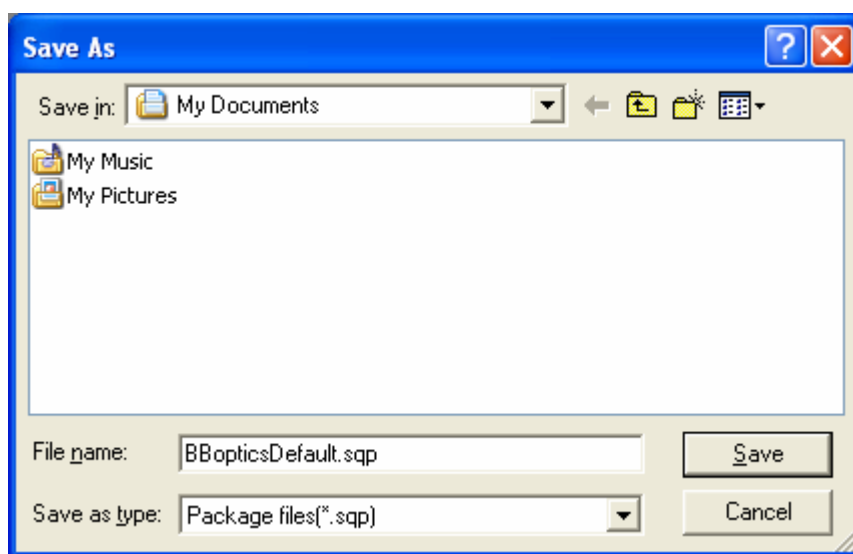
- (9) Select the **Run recommended sequence** radio button.

 Tip: First, pre-measurement is made for 2.0 minutes. Second, data measurement is made under the conditions determined based on the pre-measurement results. To confirm or set the scan conditions, select the **Customize conditions** radio button, then click the **Customize** button.

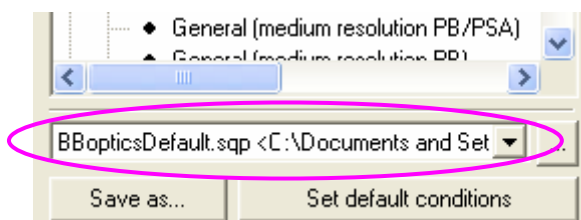
 [2.4.1 Customizing Transmission SAXS Measurement Part conditions](#)

- (10) Click the **OK** button to close the dialog box.

 Tip: To save all the Part conditions set in Subsections 2.3.1 through 2.3.3 to a single file, click the **Save as** button on the flow bar to open the **Save As** dialog box, then enter the settings in the **Save in** and **File name** boxes. Click the **Save** button.



Select a saved Package measurement conditions file (*.sqp) in the box shown on the flow bar to load the conditions stored in that file.



2.4 Customizing Part conditions

The user is free to set scan conditions and slit conditions of the **Transmission SAXS Measurement** Part. Use the **Customize** dialog box to set scan conditions and slit conditions.



Tip: To confirm the conditions set for **Run recommended sequence**, click the **Set recommended values** button in the **Customize** dialog box.

2.4.1 Customizing Transmission SAXS Measurement Part conditions

- (1) Select the **Customize conditions** radio button in the **Transmission SAXS Measurement** dialog box.
- (2) Click the **Customize** button to open the **Customize** dialog box.

Customize - Transmission SAXS Measurement

Transmission SAXS measurement conditions

Measurement purpose

- Particle-size(Pore-size) distribution analysis
- Long period analysis

Execute the pre-measurement

Execute the background measurement

Expected particle (pore) size: Less than 10 nm

Sample length(mm): 30.0

Requested scan duration

Pre-measurement: 2.0 min

Data measurement: 15.0 min

Background measurement: 15.0 min

Return to default values

Slit conditions

Soller/PSC (deg)	IS (mm)	IS L (mm)	RS1 (mm)	PSA (deg)	Soller (deg)	RS2 (mm)
5.0	0.1000	10	0.2000	vacuum path	None	0.2000

Pre-measurement conditions

Scan axis	Mode	Range	Start (deg)	Stop (deg)	Step (deg)	Speed (deg/min)	Attenuator
2-Theta	Continuous	Absolute	0.0600	8.0000	0.0200	3.9700	Open

Data measurement conditions

Scan axis	Mode	Range	Start (deg)	Stop (deg)	Step (deg)	Speed (deg/min)	Attenuator
2-Theta	Continuous	Absolute	0.0600	8.0000	0.0200	0.5293	Open

Background measurement conditions

Scan axis	Mode	Range	Start (deg)	Stop (deg)	Step (deg)	Speed (deg/min)	Attenuator
2-Theta	Continuous	Absolute	0.0600	8.0000	0.0200	0.5293	Open

Set recommended values

Calculated scan duration: 00:32:00

Close

Fig. 2.4.1 Customize dialog box

The conditions set in the **Transmission SAXS Measurement** dialog box are indicated in the **Transmission SAXS measurement conditions** and **Requested scan duration** sections.

- (3) If necessary, set conditions in the **Slit conditions**, **Pre-measurement conditions**, **Data measurement conditions**, and **Background measurement conditions** sections.



CAUTION: Clicking the **Set recommended values** button changes settings in the **Slit conditions** and **Pre-measurement conditions** sections to the values recommended based on the values specified in the **Transmission SAXS measurement conditions** and **Requested scan duration** sections. For more information, refer to “Transmission SAXS Measurement Part” Help Topic of the online help section of the SmartLab Guidance software.

When the **Pre-measurement conditions** box is checked, the data measurement conditions will be determined based on the pre-measurement results.

When the **Pre-measurement conditions** box is unchecked, pre-measurement is not made. Only a data measurement will be made under the conditions specified in the **Data measurement conditions** section.



- (4) After setting the conditions, click the **Close** button to close the **Customize** dialog box.

2.5 Executing a Package measurement


Described below is the procedure for executing the complete series of measurement operations from the optics alignment to the transmission SAXS measurement.



Tip: When executing optics alignment only, sample alignment only, or transmission SAXS measurement only, refer to [3. Executing a Part individually](#).

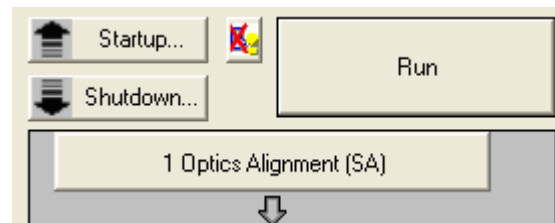
- (1) Click the  (Show confirmation messages) button to set it to  (Don't show confirmation messages).



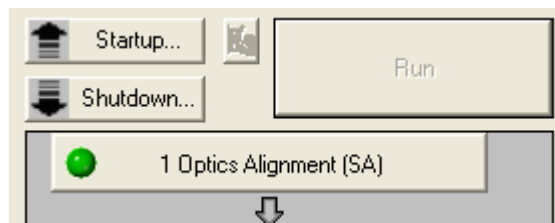
Tip: To confirm the optics alignment results or to show the message to verify that each Part has been completed, set it to  (Show confirmation messages).



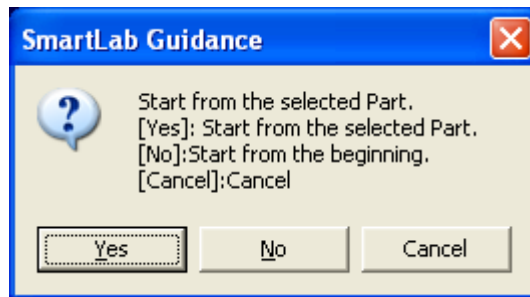
- (2) Click the **Run** button on the flow bar.



Tip: After executing a Package measurement, the ● mark appears on a button on the flow bar. The mark indicates that the Part corresponding to the button is in progress.



- (3) If the following message appears, click the **No** button.

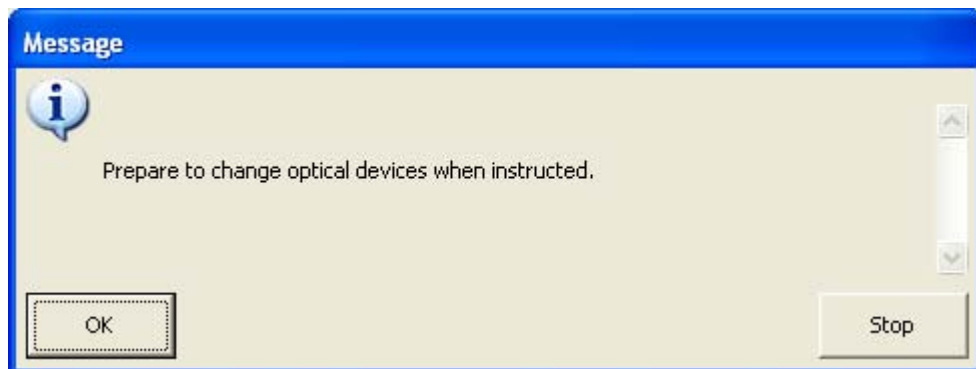


CAUTION: If the current hardware configuration setting is different from that for the operation of the **Transmission SAXS Measurement (small-angle scattering)** Package measurement, the measurement will be aborted and the **Hardware Configuration** dialog box will open. If this happens, replace the configuration units (e.g., the attachment) as prompted by the message in the dialog box.

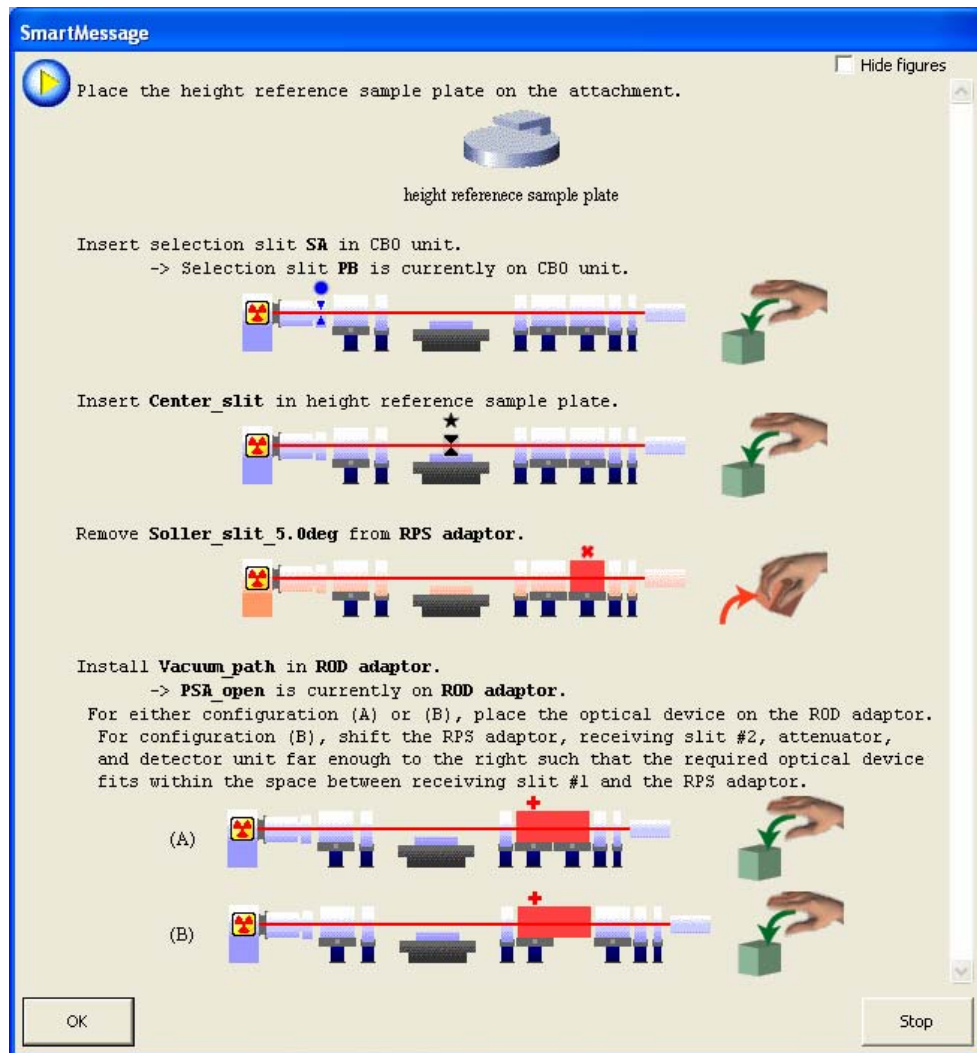


[2.6 Changing configuration units](#)

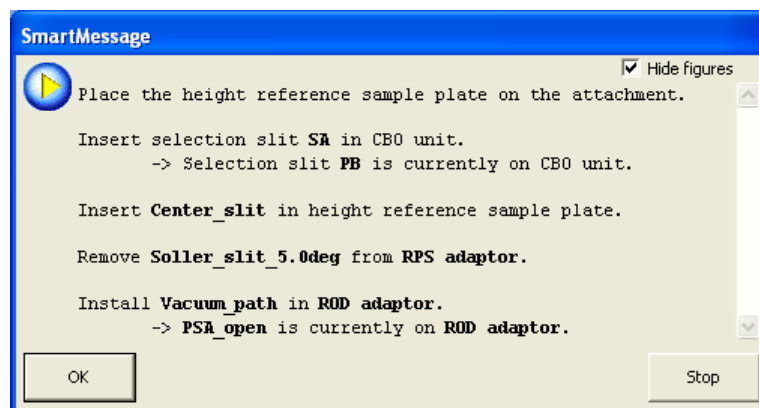
- (4) A message will prompt you to replace optical devices in the middle of the measurement. Confirm the message and click the **OK** button.



- (5) When the following message appears, place the height reference sample plate on the attachment and insert the center slit into the height reference sample plate. If another message appears at the same time prompting for replacement of the optical device(s) such as the selection slit, install the specified optical device(s) as indicated by the message.





Tip: When the **Hide figures** box is checked, only the message is displayed without figures.




- (6) Click the **OK** button to execute optics alignment.

The optics alignment will be performed under the recommended conditions, and it will be completed in about 10 minutes.

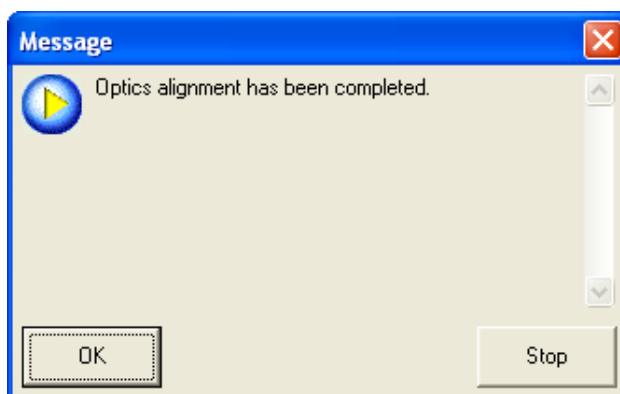
- (7) The specific procedure in this step depends on the setting  or  on the flow bar. Follow the directions given below.

When  (Don't show confirmation messages) is set:

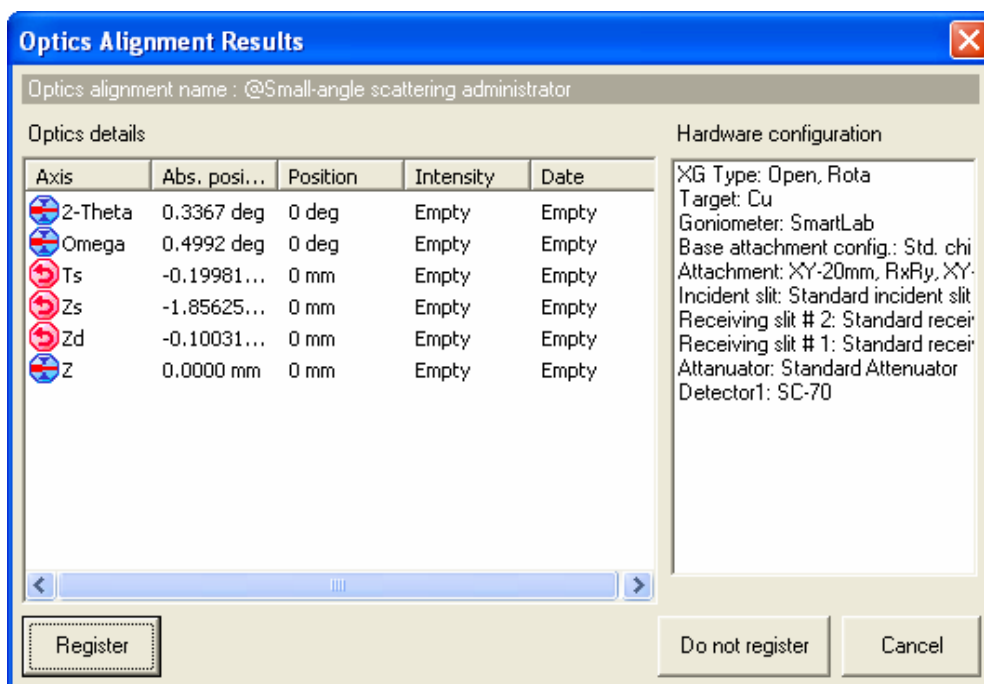
The optics alignment results will be registered in the optics management database.

When  (Show confirmation messages) is set:

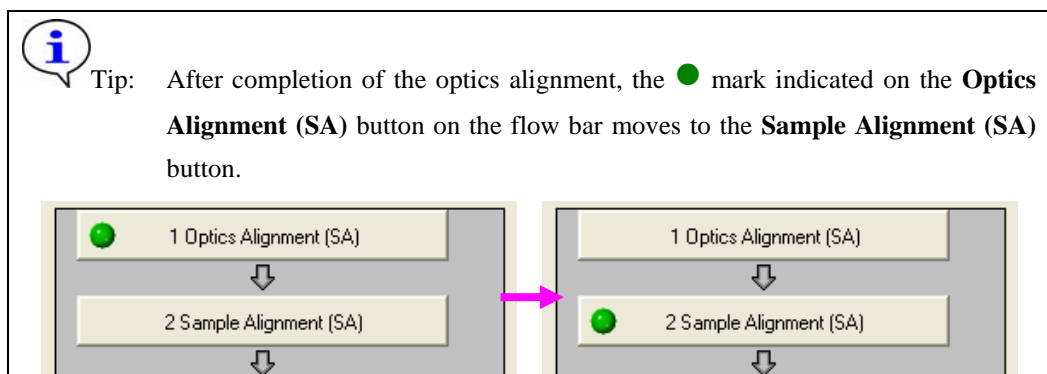
- The following message will appear to verify the optics alignment has been completed. Click the **OK** button.



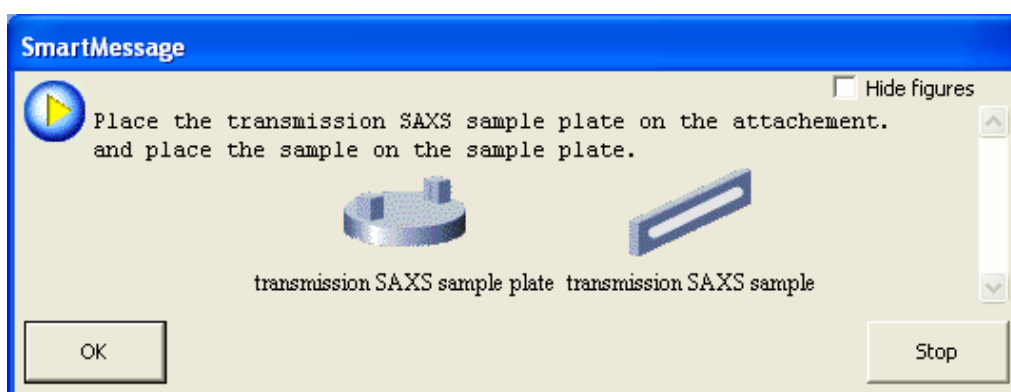
- The **Optics Alignment Results** dialog box will appear. Confirm the results and click the **Register** button. The optics alignment results will be registered in the optics management database.




CAUTION: Clicking the **Do not register** button sets the zero offset value for each axis, but does not register the optics alignment results in the optics management database.

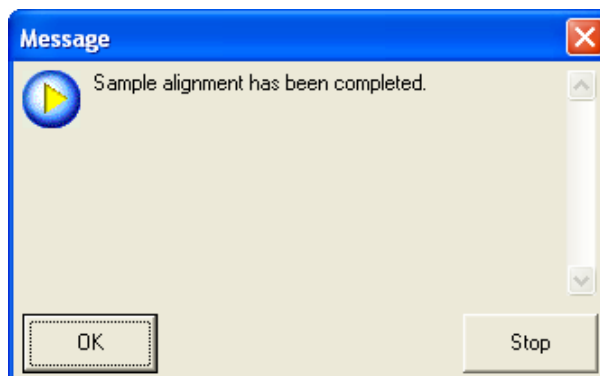


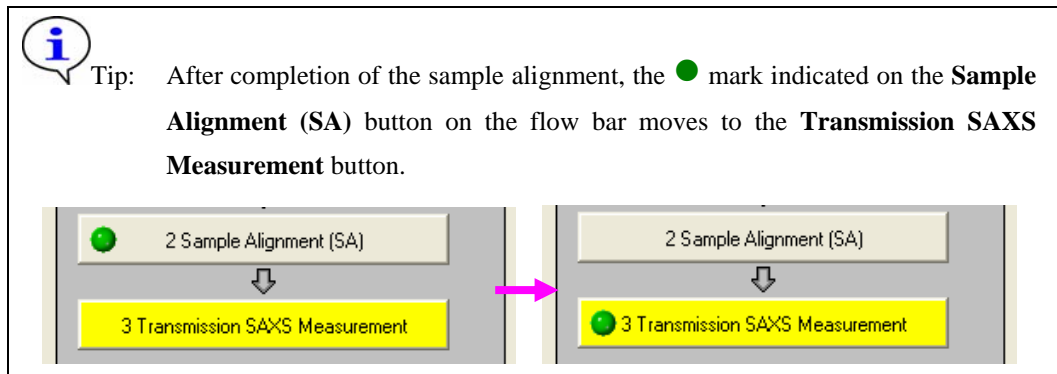
- (8) The following message will appear. Based on this message, place the transmission SAXS sample plate on the attachment, and place the sample on the transmission SAXS sample plate. If another message appears at the same time prompting for replacement of the manual exchange slit(s) such as the length limiting slit, install the specified manual exchange slit(s) as indicated by the message.



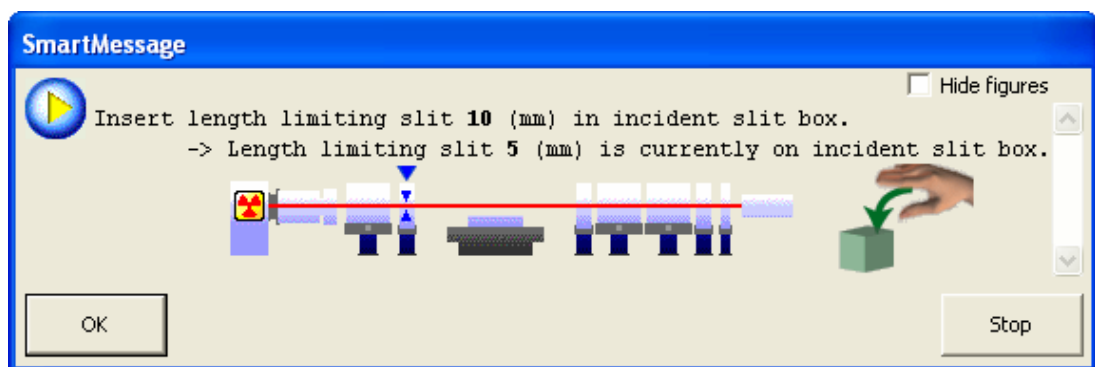
- (9) Click the **OK** button to execute sample alignment. When **Capillary** is selected in the **Sample Alignment (SA)** dialog box, sample alignment will be performed to position the sample in the center of the x-ray beam. The sample alignment will be completed in about 2 minutes.

Only when  (Show confirmation messages) is set on the flow bar, the message will appear to verify the sample alignment has been completed. Click the **OK** button.



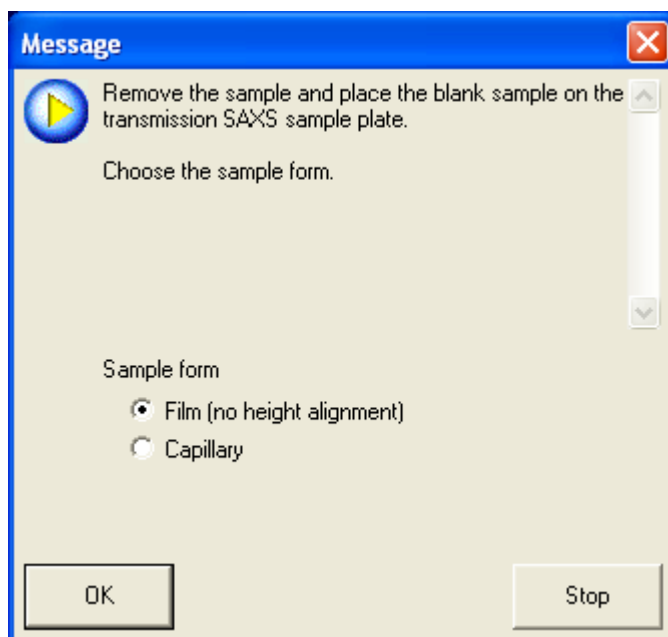


- (10) If the manual exchange slit(s) differs from those specified in the **Customize** dialog box of the **Transmission SAXS Measurement** Part, a message will appear like below. If instructed by the message, install the specified manual exchange slit(s) as prompted.



- (11) Click the **OK** button to execute a transmission SAXS measurement. First, pre-measurement will be made under the specified conditions. Second, data measurement will be made under the conditions determined based on the pre-measurement results.


- (12) If the **Execute the background measurement** box is checked in the **Transmission SAXS Measurement** dialog box, the following message will appear.

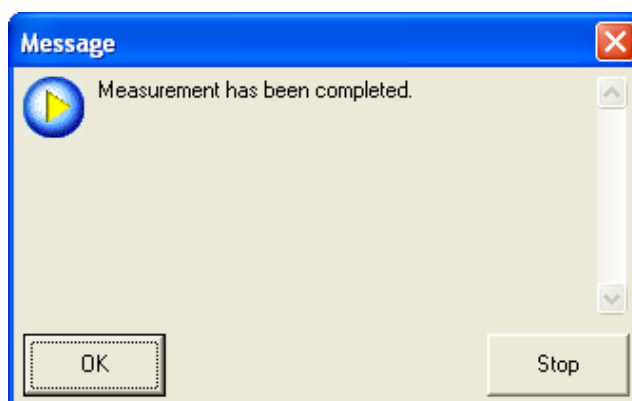


1. Remove the sample, and place the blank sample (a sample for background measurement) on the transmission SAXS sample plate.
 2. Select **Film (no height alignment)** or **Capillary** as the sample form.
 3. Click the **OK** button.

When **Film (no height alignment)** is selected, only background measurement will be made without sample alignment.

When **Capillary** is selected, background measurement will be made after the sample alignment to position the blank sample in the center of the x-ray beam.
- (13) After completion of the measurement, the measurement data will be saved under the file name set in Subsection 2.3.3 (2).

Only when  (Show confirmation messages) is set on the flow bar, the message will appear to verify the transmission SAXS measurement has been completed. Click the **OK** button.



This is the end of the **Transmission SAXS (small-angle scattering)** Package measurement.

2.6 Changing configuration units

After a Package measurement (or Part) is executed, and the hardware configuration is not set for the Package measurement or the Part, the **Hardware Configuration** dialog box will open. A message appears below the dialog box prompting you to change the configuration units preventing the use of the Package measurement or the Part.

For example, if the target has been set to **Mo** in the **X-Ray Generator** dialog box, the displayed message will show “Target: Change Mo to Cu.”, since the target must be Cu for the **Transmission SAXS (small-angle scattering)** Package measurement.



CAUTION: Execution of the Package measurement or Part aborts when the **Hardware Configuration** dialog box appears.

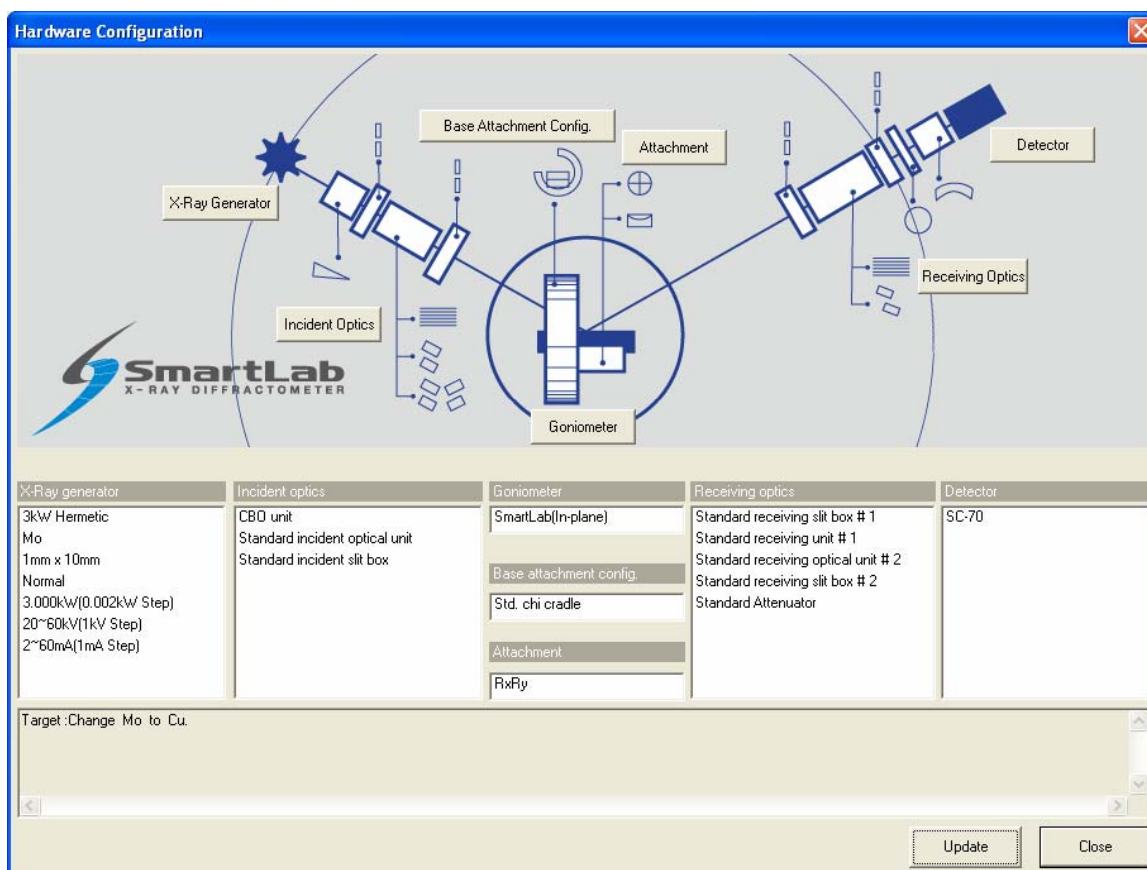


Fig. 2.6.1 Hardware Configuration dialog box

If the **Hardware Configuration** dialog box appears, replace the configuration units as prompted by the message in the dialog box and update the contents of the **Hardware Configuration** dialog box.

This procedure is described below.

- (1) Change the target in the x-ray generator from Mo to Cu. For sealed tubes, replace the Mo tube with the Cu tube.

- (2) Click the **X-Ray Generator** button to open the **X-Ray Generator** dialog box.

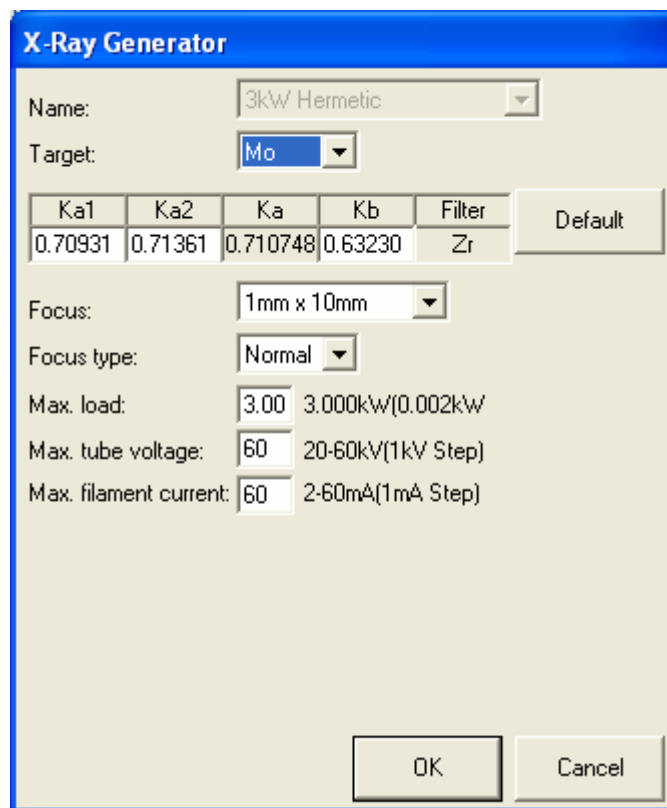
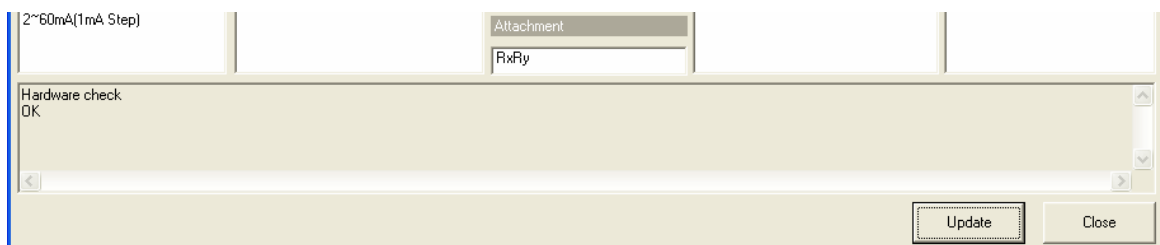


Fig. 2.6.2 X-Ray Generator dialog box

- (3) Select **Cu** in the **Target** box. Change any other parameters as necessary.
- (4) Click the **OK** button to close the dialog box.
- (5) If necessary, make changes for **Incident Optics**, **Receiving Optics**, and **Detector** in the same way.
- (6) Click the **Update** button in the **Hardware Configuration** dialog box.
- (7) Confirm that the **Hardware Configuration** dialog box displays the message “Hardware check OK”, then click the **Close** button to close the dialog box.



CAUTION: To execute the measurement once again, click the **Run** button on the **Package Measurement** flow bar or the **Execute** button in the applicable Part dialog box.

2.7 Shutdown

After completion of all measurements, turn off the x-ray generator as described below.

- (1) Click the **Shutdown** button on the flow bar to open the **Shutdown** dialog box.



- (2) Uncheck the **Execute** box.

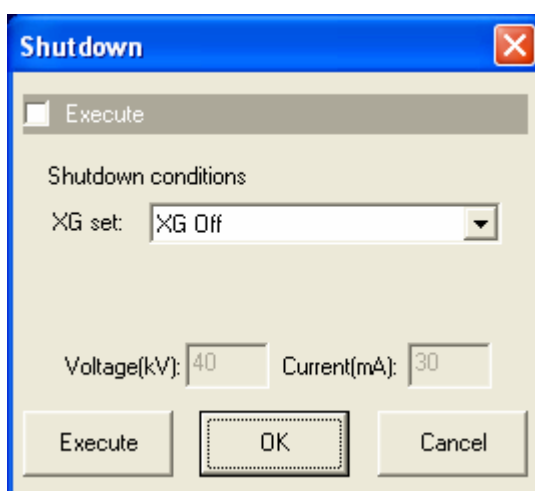


Fig. 2.7.1 Shutdown dialog box

- (3) Select **XG Off** in the **XG set** box.
- (4) Click the **Execute** button.
- (5) The shutdown operation is executed. The x-ray generator will be turned off in about 10 minutes.



Tip: For information on other functions available from the **Shutdown** dialog box, refer to Chapter 21 of the *SmartLab Guidance Reference Manual* (ME13365A).

3. Executing a Part individually

In this chapter, how to execute the following Parts individually is described.

Optics Alignment (SA) Part

Sample Alignment (SA) Part

Transmission SAXS Measurement Part

3.1 Executing the Optics Alignment (SA) Part

- (1) Click the **Optics Alignment (SA)** button on the flow bar to open the **Optics Alignment (SA)** dialog box.

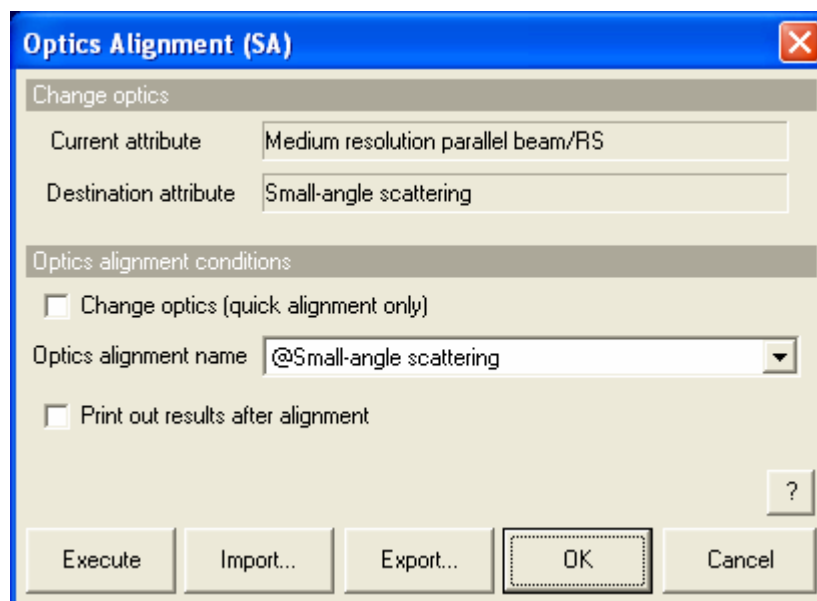


Fig. 3.1.1 Optics Alignment (SA) dialog box

- (2) Uncheck the **Change optics (quick alignment only)** box.



Tip: Check the **Change optics (quick alignment only)** box to switch optics for the transmission SAXS measurement using the alignment results stored under the selected optics alignment name by performing a quick alignment.

- (3) In the **Optics alignment name** box, select a location for storing optics alignment results.



Tip: To store optics alignment results under a new optics alignment name, click the **OK** or **Cancel** button to close the **Optics Alignment (SA)** dialog box. Then, select the **Optics Management** command from the **Options** menu to open the **Optics Management** dialog box and add a new optics alignment name. After adding a new optics alignment name, return to step (1) in this section. For more information on creating an optics alignment name, refer to Chapter 17 of the *SmartLab Guidance Reference Manual (ME13365A)*.

3. Executing a Part individually

- (4) To print the optics alignment results, check the **Print out results after alignment** box.



Tip: If both the **Change optics (quick alignment only)** and **Print out results after alignment** boxes are checked, the alignment results stored under the selected optics alignment name will be printed.

- (5) Click the **Execute** button in the **Optics Alignment (SA)** dialog box.
- (6) Optics alignment is executed followed by steps (5) through (7) in Section 2.5.



CAUTION: If the current hardware configuration setting is different from that for the operation of the **Optics Alignment (SA)** Part, the optics alignment will be aborted and the **Hardware Configuration** dialog box will open. If this happens, replace the configuration units (e.g., the attachment) as prompted by the message in the dialog box.



[2.6 Changing configuration units](#)

3.2 Executing the Sample Alignment (SA) Part

- (1) Click the **Sample Alignment (SA)** button on the flow bar to open the **Sample Alignment (SA)** dialog box.

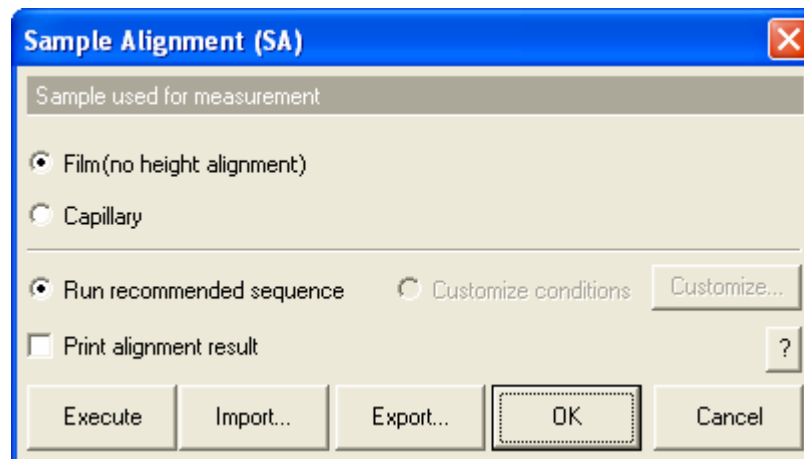


Fig. 3.2.1 Sample Alignment (SA) dialog box

- (2) Select **Film (no height alignment)** or **Capillary** as the sample form.
- (3) To print the sample alignment results, check the **Print alignment result** box.



Tip: It is recommended to print the alignment results to estimate the transmission factor (absorption factor) of x-rays for the sample.

- (4) Click the **Execute** button in the **Sample Alignment (SA)** dialog box.
- (5) Sample alignment is executed followed by steps (8) and (9) in Section 2.5.



CAUTION: If the current hardware configuration setting is different from that for the operation of the **Sample Alignment (SA)** Part, the sample alignment will be aborted and the **Hardware Configuration** dialog box will open. If this happens, replace the configuration units (e.g., the attachment) as prompted by the message in the dialog box.



[2.6 Changing configuration units](#)

3.3 Executing the Transmission SAXS Measurement Part

- (1) Click the **Transmission SAXS Measurement** button on the flow bar to open the **Transmission SAXS Measurement** dialog box.

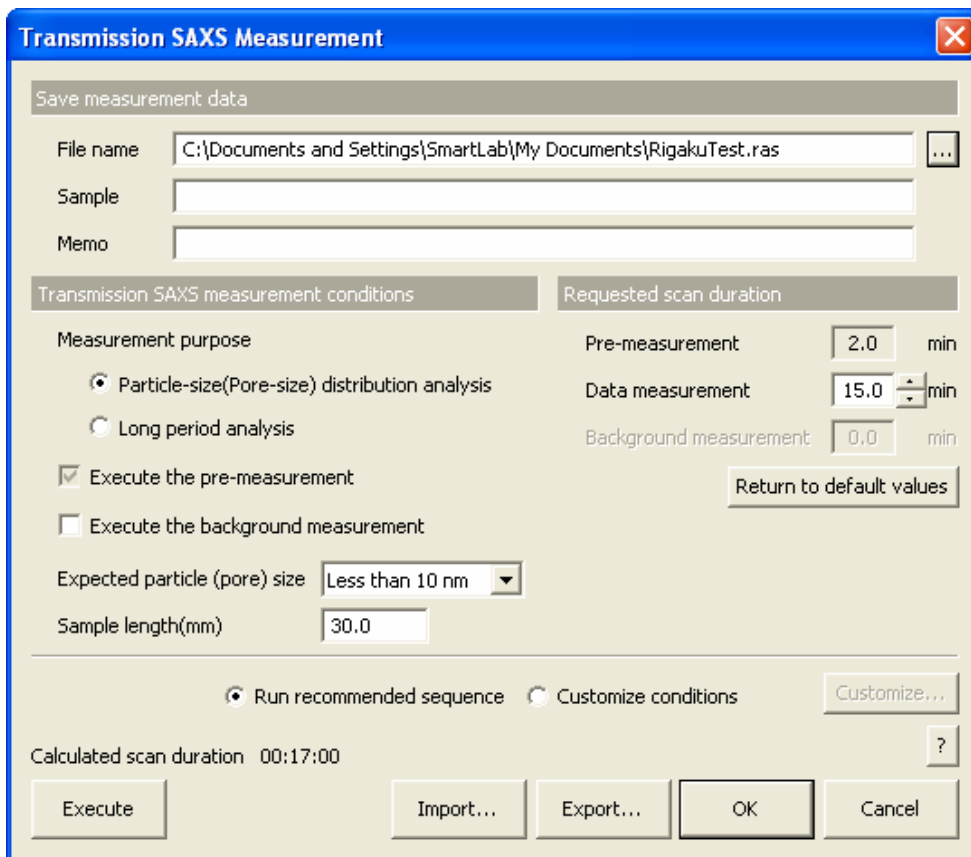


Fig. 3.3.1 Transmission SAXS Measurement dialog box

- (2) Set the folder to store the measurement data and the name of the measurement data file in the **File name** box in the **Save measurement data** section. After completing the transmission SAXS measurement, the measurement data will be saved with the specified file name.

1. Click the [...] button to open the **Save As** dialog box.

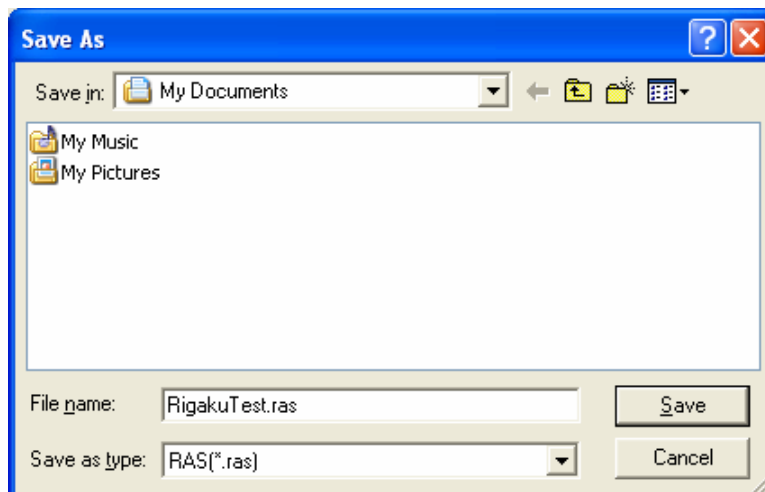


Fig. 3.3.2 Save As dialog box

2. Enter the settings in the **Save in** and **File name** boxes.
3. Click the **Save** button.
- (3) Enter any required information in the **Sample name** and **Memo** boxes (optional).



CAUTION: The information entered here will be saved to the file. Any number of characters may be entered, but only the first 30 characters of the sample name and the first 84 characters of the memo will appear on the printed measurement data.

- (4) Select **Particle-size (Pore-size) distribution analysis** or **Long period analysis** for **Measurement purpose**.
- (5) To make a background measurement, check the **Execute the background measurement** box.
- (6) In the **Expected particle(pore) size** box, select **More than 10 nm**, **Less than 10 nm**, or **Unknown** as the expected particle/pore size.

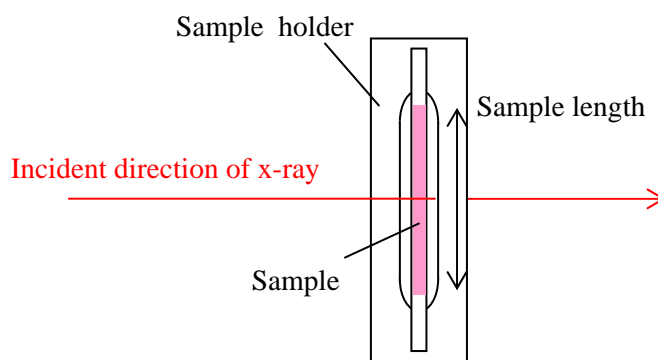


Tip: Set the conditions in steps (5) and (6) only when **Particle-size(Pore-size) distribution analysis** is selected for **Measurement purpose**.

- (7) Enter the length of the sample in the **Sample length (mm)** box.



Tip: The sample length refers to the dimension (unit: mm) of the sample in the direction shown below.



- (8) Enter the preferred duration of the data measurement in min (to one decimal place) in the **Data measurement** box.



Tip: The default value is 15.0 minutes.

3. Executing a Part individually

- (9) Select the **Run recommended sequence** radio button.



Tip: First, pre-measurement is made for 2.0 minutes. Second, data measurement is made under the conditions determined based on the pre-measurement results. To confirm or set the scan conditions, select the **Customize conditions** radio button, then click the **Customize** button.



[2.4.1 Customizing Transmission SAXS Measurement Part conditions](#)

- (10) Click the **Execute** button in the **Transmission SAXS Measurement** dialog box.
- (11) Transmission SAXS measurement is executed followed by steps (10) through (13) in Section 2.5.



CAUTION: If the current hardware configuration setting is different from that for the operation of the **Transmission SAXS Measurement** Part, the transmission SAXS measurement will be aborted and the **Hardware Configuration** dialog box will open. If this happens, replace the configuration units (e.g., the attachment) as prompted by the message in the dialog box.



[2.6 Changing configuration units](#)

4. Troubleshooting

Problem	Response
Previously saved conditions cannot be imported through the Optics Alignment (SA) dialog box.	<ul style="list-style-type: none"> • Confirm that the user name displayed on the title bar of the main window is correct. • Add the name of the optics alignment again in the Optics Management dialog box.
Previously saved conditions cannot be imported through the Sample Alignment (SA) dialog box.	<ul style="list-style-type: none"> • Confirm that the user name displayed on the title bar of the main window is correct.
Previously saved conditions cannot be imported through the Transmission SAXS Measurement dialog box.	<ul style="list-style-type: none"> • Confirm that the user name displayed on the title bar of the main window is correct.
Package measurement cannot be executed.	<ul style="list-style-type: none"> • Check to see if the XG output is as specified. • Check to see if the door of the radiation enclosure is closed.
Clicking the OK button in a message box will result in the same message box reappearing.	<ul style="list-style-type: none"> • Confirm that the specified slit and other devices are installed correctly. Also, make sure that the necessary devices have not been removed.
Sufficient intensity cannot be obtained for transmission SAXS measurement.	<ul style="list-style-type: none"> • <u>Check to see if an absorber is inserted in the receiving slit box.</u> • Confirm that the XG output has reached the specified levels. • Measure the reference gold particles for SAXS (option) using the Run recommended sequence mode and check the intensity.